

# HARWOOD MARINE



## 35M HSE ALUMINIUM CAT CARGO/PAX COMBO

### PRINCIPAL DIMENSIONS:

Length Overall	:	36.23 metres
Length USL	:	34.90 metres
Length Waterline	:	32.98 metres
Beam (moulded)	:	10.0 metres
Depth (moulded)	:	3.60 metres
Hull Draft (approx.)	:	1.25 metres
Max Draft incl props	:	1.70 metres

### PAYLOAD CAPACITIES:

Passengers (in)	:	up to 200 + cargo palettes and cars
Cars	:	3
Fuel	:	7000 litres
F/W	:	600 litres

### PROPULSION:

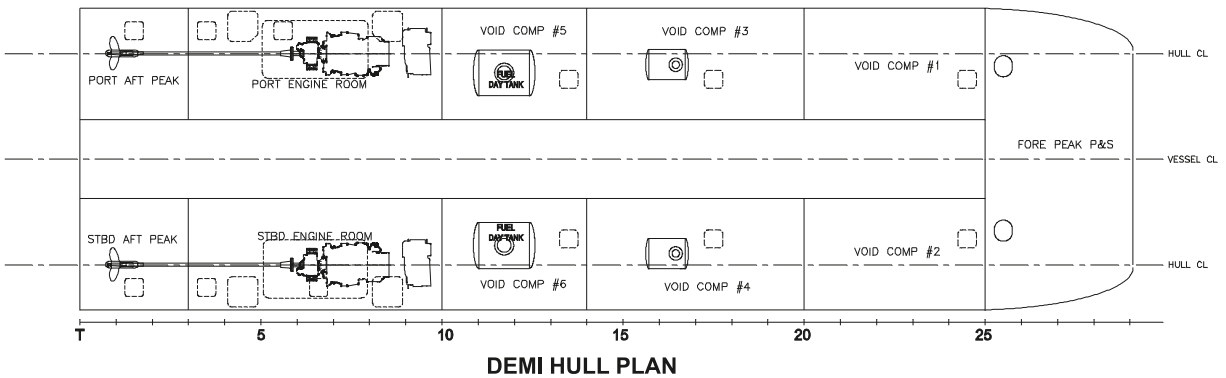
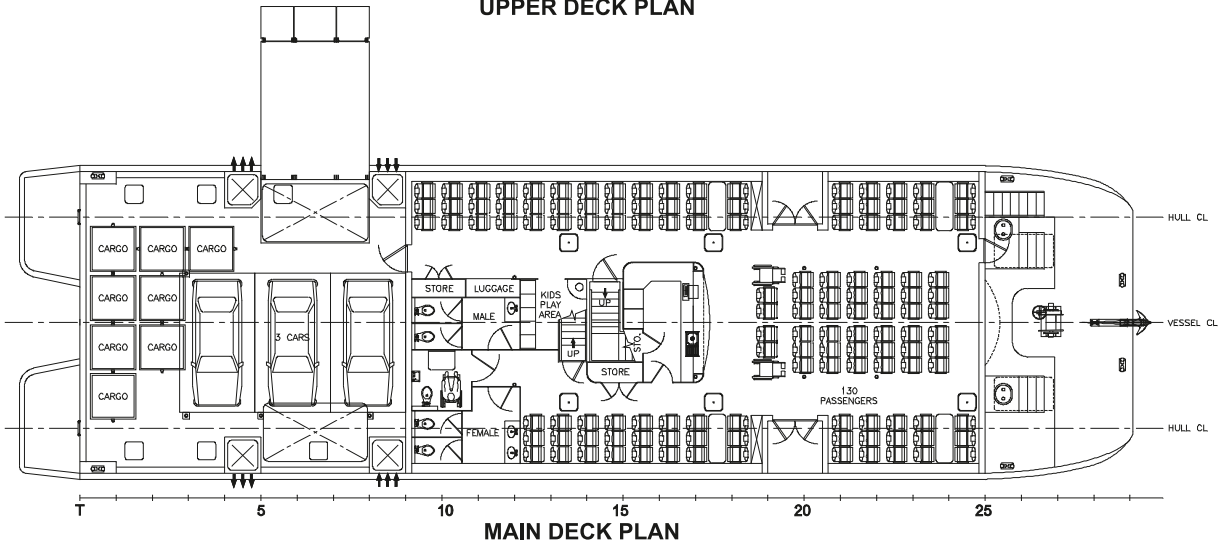
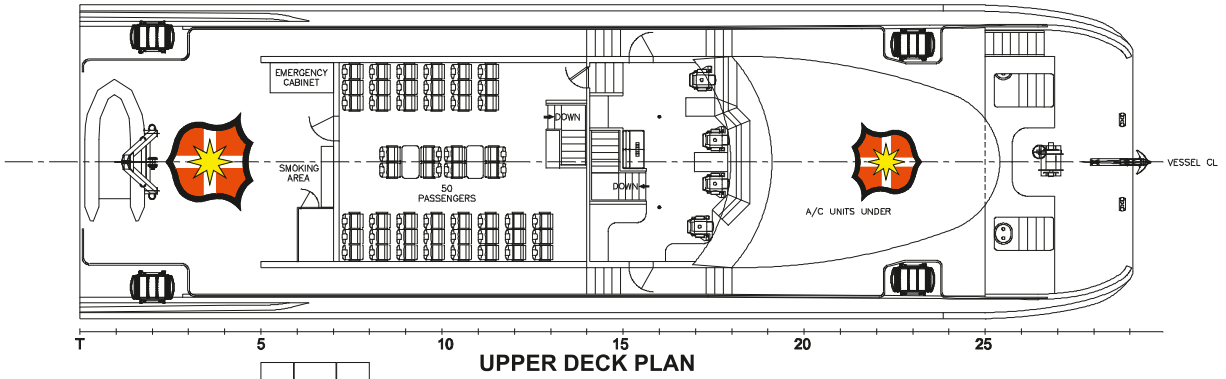
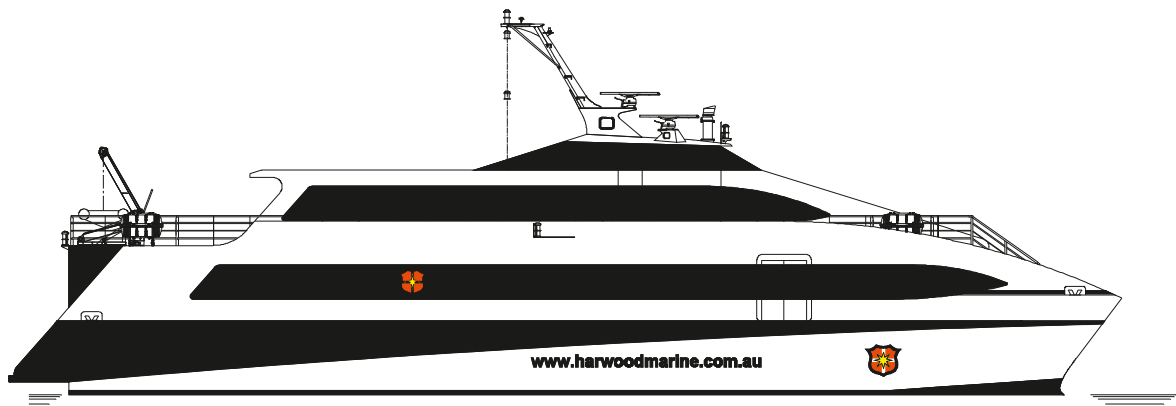
Main Engines	:	2 - CAT C32 ACERT 970 kW @ 2100 RPM Cat 'B' Rating
Gearboxes	:	2 - ZF or Twin Disc
Propellers	:	2 - Stone Marine 5 BL or similar

### PERFORMANCE:

Speed (service)	:	approx 26knots
Speed (max)	:	approx 28knots
Ride Control optional	:	

### CLASS/SURVEY:

Germanischer Lloyd (GL) USL Class 1C



**Contacts:**

**Australia & New Zealand  
Harwood Marine - Harwood**  
162-164 River Road,  
Harwood Island, NSW 2465  
P.O. Box 96, Harwood Island,  
NSW 2465, Australia  
Phone: +61 (0) 2 6646 4222  
Fax: +61 (0) 2 6646 4472  
Website: [www.harwoodmarine.com.au](http://www.harwoodmarine.com.au)

**South East Asia  
Harwood Marine Int'l - Cebu**  
1 Mezzanine Floor, Don  
Alfredo D. Gothong Center,  
S. Osmeña Boulevard, North  
Reclamation Area, Cebu City  
6000, Philippines  
Mobile: +63 (0) 917 327 0077  
Phone: +63 (0) 32 238 0212  
Email: [stevea@harwoodmarine.com.au](mailto:stevea@harwoodmarine.com.au)  
Website: [www.harwoodmarine.com.au](http://www.harwoodmarine.com.au)